

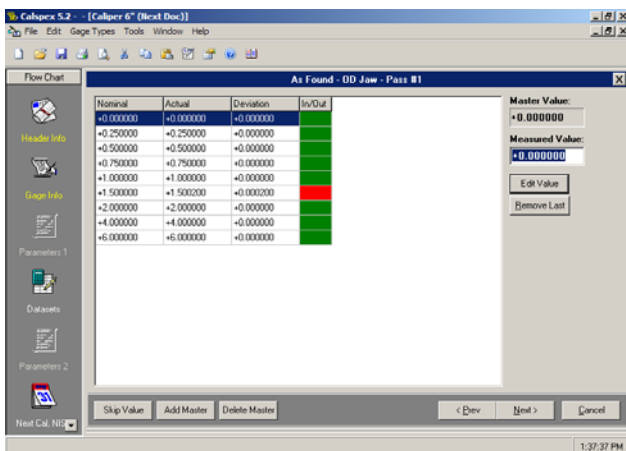


The Vantek Calibration Control Software provides a complete calibration and gage tracking system for all types of gages and equipment. It facilitates the writing of calibration reports and the organization of important data.

Calspex is a procedure-based calibration and data entry program. It guides you through the calibration process, during which you only enter the required information when prompted. The calibration report generated is concise and informative. Reports are saved to a local drive or network drive for quick accessibility. Printing hardcopies is optional.

The integrated Thread Calculator can be used when calibrating threaded plugs and threaded rings to quickly and accurately calculate all thread dimensions. Simply provide the software with the thread form, nominal diameter, and pitch; the software will calculate your master dimensions for that thread. The calculator accommodates non-standard thread wire sizes, special threads, and custom length of engagements.

When combined with Calspex RO and a master gage, calibration becomes even easier. Calspex RO not only functions as a normal Digital Readout, it feeds the actual calibration data directly into Calspex. This eliminates the need to retype data and decreases the error potential.



Please visit our website for more information: www.nemcal.com

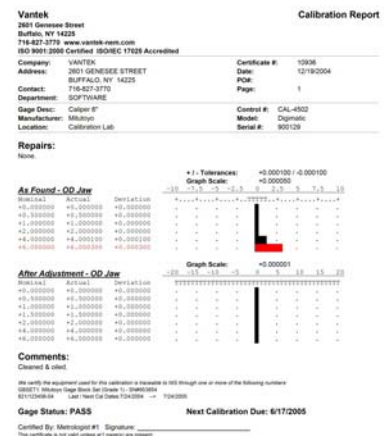
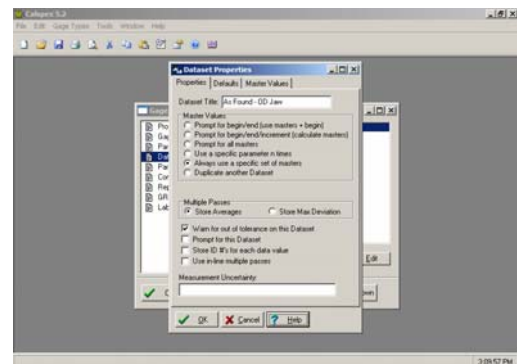
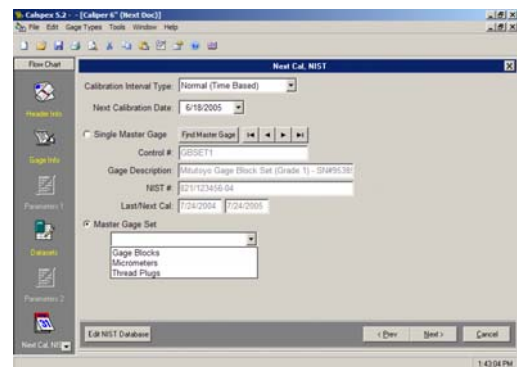
Vantek also provides customized computer systems. We can build a PC according to your company's needs.

We will pre-install our software and any necessary hardware required for your specific applications. Most standard third-party software packages are provided.



Calspex Features

- Store complete gage information including control/asset number, individual ID#,s, manufacturer, model, serial number, location, department, etc.
- Warns the user if an already existing control number is entered
- Create an unlimited number of custom gage templates (Gage Types) used to create certificates
- Pre-defined Gage Types provided for easy startup
- Complete control over all numerical values of calibration points and intervals
- Support for all types of tolerances (% of nominal, % of range, +/-)
- Use “un-even” tolerances: (+0.0005 / - 0.0002)
- Add, delete, or skip nominal values at any time during the calibration
- Store comments, text, and repairs about each calibration
- Print uncertainty values on calibration reports
- Store complete information for an unlimited number of master gages (NIST traceable)
- Combine multiple masters into master sets
- Enter detailed NIST information for your master gages
- Print Long or Short Form Calibration Certificates
- Duplicate a last calibration for fast entry of similar gages
- UN, UNR, UNJ, ACME, Stub ACME, SAM 1, SAM 2, Metric, and MJ thread dimensions supported
- Preview reports before printing (Print Preview)
- Print calibration labels using a Brother P-Touch PC printer or Zebra label printer
- Customize calibration labels for each gage type
- Generate a GR&R Report for each calibration, or use GR&R “families”
- Store ALL calibration data for a gage in a single file (calibration report)
- Automatically updates the Recall Database
- An unlimited number of multiple user/network seats available
- Calibration status includes Pass, Fail, Readings As Found and Limited Calibration
- Quick and easy import/export features used primarily with on-site calibration (for use with a laptop)



Northeast Metrology Corp/Vantek: 4490 Broadway Depew, New York 14043
 Phone: 716-827-3770 Fax: 716-827-3775
 Website: <http://www.nemcal.com> e-mail: vantek@nemcal.com